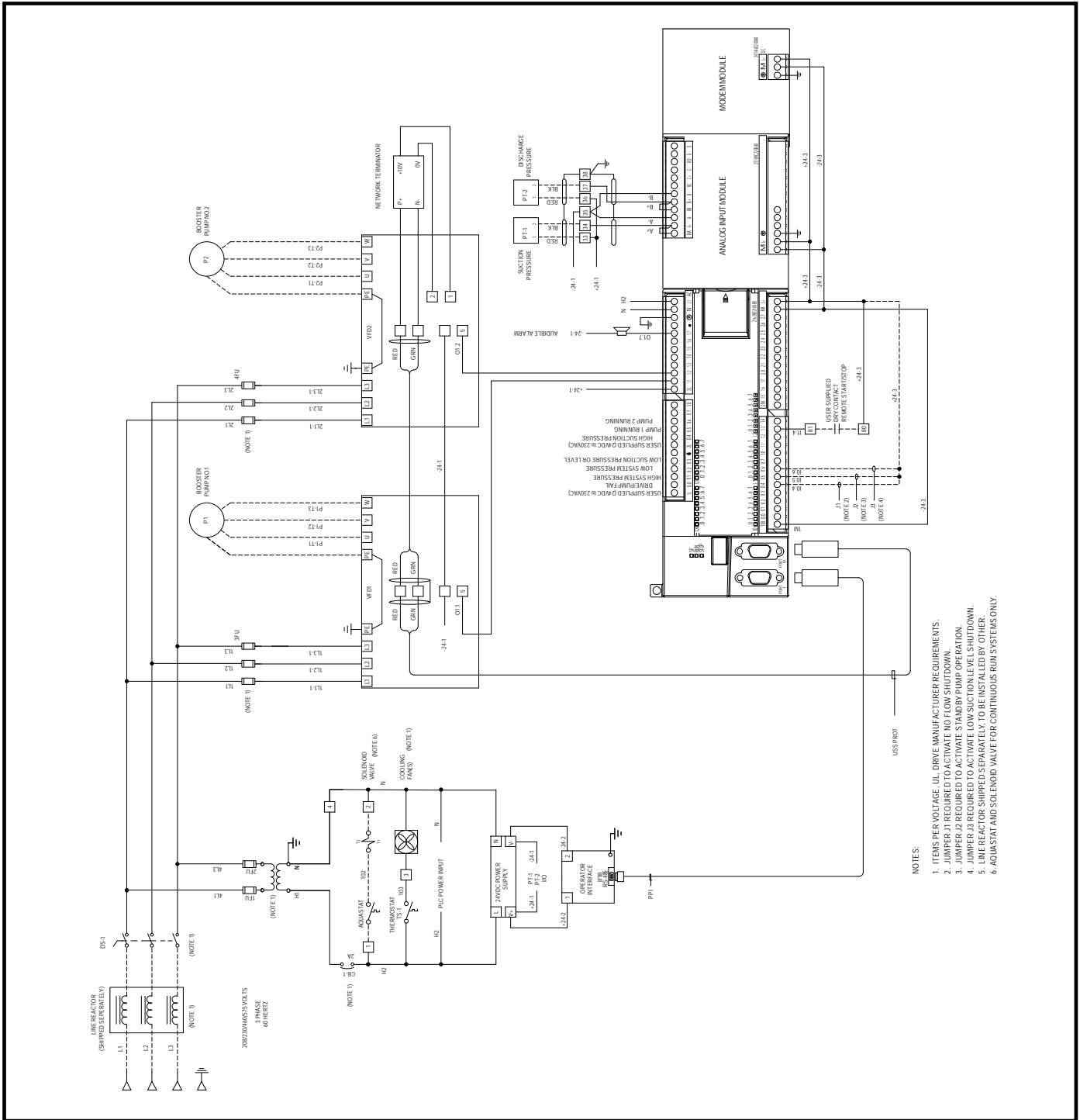


WIRING DIAGRAM SUBMITTAL Duplex VFD Booster Schematic



- NOTES:
- ITEMS PER VOLTAGE. I.H. DRIVE MANUFACTURER REQUIREMENTS.
 - JUMPER 1 REQUIRED TO ACTIVATE LOW Suction SHUTDOWN.
 - JUMPER 2 REQUIRED TO ACTIVATE STANDBY PUMP OPERATION.
 - JUMPER 3 REQUIRED TO ACTIVATE LOW Suction LEVEL SHUTDOWN.
 - JUMPER 4 REQUIRED TO ACTIVATE HIGH Suction LEVEL SHUTDOWN.
 - LINE REACTOR SHIPPED SEPARATELY TO BE INSTALLED BY OTHER.
 - AQUASTAT AND SOLENOID VALVE FOR CONTINUOUS RUN SYSTEMS ONLY.

S. A. Armstrong Limited
 23 Bertrand Avenue
 Toronto, Ontario
 Canada, M1L 2P3
 T: (416) 755-2291
 F (Main): (416) 759-9101

Armstrong Pumps Inc.
 93 East Avenue
 North Tonawanda, New York
 U.S.A. 14120-6594
 T: (716) 693-8813
 F: (716) 693-8970

Armstrong Holden Brooke Pullen Ltd.
 Wenlock Way
 Manchester
 United Kingdom, M12 5JL
 T: +44 (0) 161 223 2223
 F: +44 (0) 161 220 9660