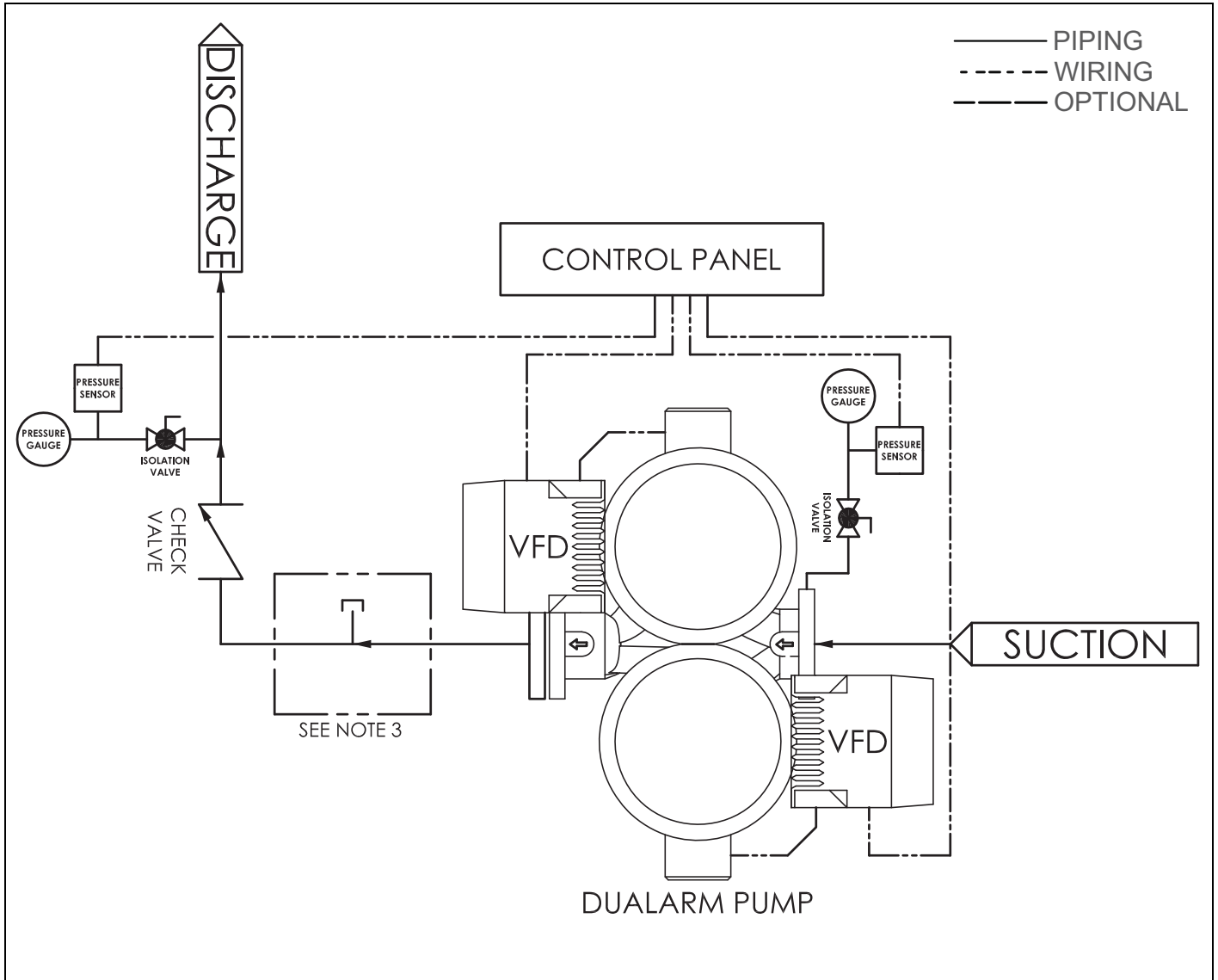


6901/2/3/4 IVS Booster Piping Schematic (For Booster submittals - 2546-000, 2546-100)



- Note: 1. SEE WIRING DIAGRAM SUBMITAL FOR DETAILED WIRING INFORMATION.
 2. SEE BOOSTERS SUBMITAL FOR SUCTION/DISCHARGE CONNECTION OPTIONS.
 3. OPTIONAL TEE PROVIDED WHEN TANK IS TO BE CONNECTED BY OTHER.

S. A. Armstrong Limited
 23 Bertrand Avenue
 Toronto, Ontario
 Canada, M1L 2P3
 T: 416-755-2291
 F: 416-759-9101

Armstrong Pumps Inc.
 93 East Avenue
 North Tonawanda, New York
 U.S.A. 14120-6594
 T: 716-693-8813
 F: 716-693-8970

Armstrong Integrated Limited
 Wenlock Way
 Manchester
 United Kingdom, M12 5JL
 T: +44 (0) 8444 145 145
 F: +44 (0) 8444 145 146

