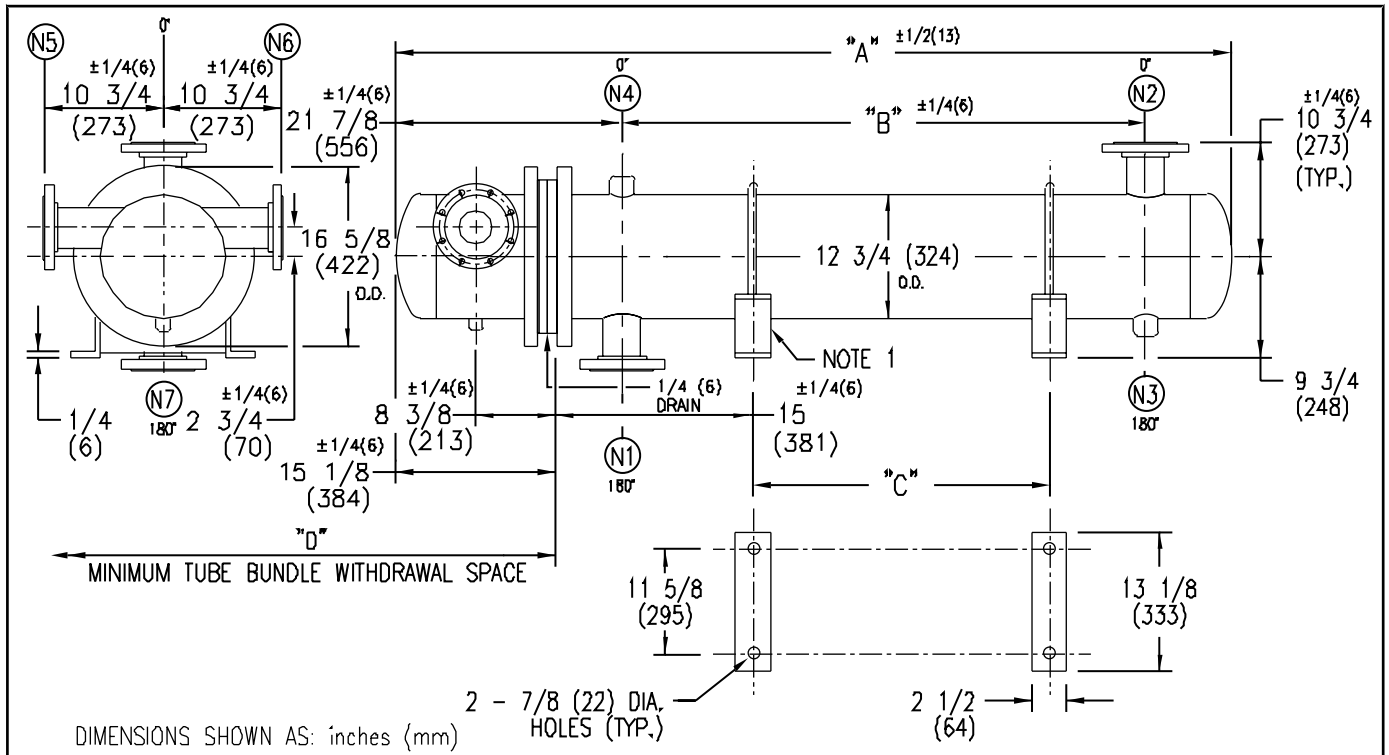


ARMSTRONG®



EXCHANGER SIZE * - BAFFLE SPACING	DIMENSIONS											
	A		B		C		D		(N1)		(N2)	
	inches	mm	inches	mm	inches	mm	inches	mm	inches	mm	inches	mm
WX-123-4*-4	53 1/8	1349	23	584	10	254	40	1016	6	152	6	152
WX-124-4*-4	65 1/8	1654	35	889	22	559	52	1321	6	152	6	152
WX-125-4*-4	77 1/8	1959	47	1194	34	864	64	1626	6	152	6	152
WX-126-4*-4	89 1/8	2264	59	1499	46	1168	76	1930	6	152	6	152
WX-127-4*-4	101 1/8	2569	71	1803	58	1473	88	2235	6	152	6	152
WX-128-4*-4	113 1/8	2873	83	2108	70	1778	100	2540	6	152	6	152
WX-129-4*-4	125 1/8	3178	95	2413	82	2083	112	2845	6	152	6	152
WX-1210-4*-4	137 1/8	3483	107	2718	94	2388	124	3150	6	152	6	152
WX-1211-4*-4	149 1/8	3788	119	3023	106	2692	136	3454	6	152	6	152
WX-1212-4*-4	161 1/8	4093	131	3327	118	2997	148	3759	6	152	6	152
WX-1213-4*-4	173 1/8	4397	143	3632	130	3302	160	4064	6	152	6	152
WX-1214-4*-4	185 1/8	4702	155	3937	142	3607	172	4369	6	152	6	152
WX-1215-4*-4	197 1/8	5007	167	4242	154	3912	184	4674	6	152	6	152

NOZZLE SCHEDULE				
SERVICE	MARK	SHELL SIDE	MARK	TUBE SIDE
INLET	(N1)	AS PER TABLE	(N5)	4 (102) FLG
OUTLET	(N2)	AS PER TABLE	(N6)	4 (102) FLG
DRAIN	(N3)	1/2 (13) NPT	(N7)	1/2 (13) NPT
VENT	(N4)	3/4 (19) NPT		

NOTES: 1. SUPPORTS SUPPLIED ONLY IF SPECIFIED ON ORDER.
 2. NOZZLE SIZES SHOWN ARE RECOMMENDED FOR MAX. EXCHANGER LIFE, NO EXTERNAL FORCES APPLY.
 3. FABRICATED TO ASME CODE SECTION VIII DIVISION 1 AND LATEST ADDENDA.
 4. DRAWING IS NOT TO SCALE.
 5. ALL DIM'S ±1/8 (3) UNLESS OTHERWISE SHOWN.

DESIGN CONDITIONS				
	SHELL		TUBES	
DESIGN PRESSURE	150 PSIG	1034 KPa	150 PSIG	1034 KPa
DESIGN TEMPERATURE	375 °F	191 °C	375 °F	191 °C
MIN. DESIGN METAL TEMP.	40 °F	1.7 °C	40 °F	1.7 °C
HYDRO. TEST PRESSURE	225 PSIG	1551 KPa	225 PSIG	1551 KPa
CONTENTS	WATER		WATER	

CUSTOMER: _____
 LOCATION: _____
 ENGINEER: _____
 ORDER No.: _____
 PROJECT/JOB: _____
 LOCATION: _____
 TAG: _____ (QUOTE # _____)

TITLE G.A. 150 LB. WX SERIES HEAT EXCHANGERS	A R M S T R O N G				NUMBER WX-12-4P-4(6)	REV. A C.O.#9159 FEB.5/03 J.R.
DATE: 12/01/94 BY: D.C.R.	TORONTO - CANADA TEL: (416) 755-2291	MONTREAL - CANADA TEL: (514) 421-2424	BUFFALO - N. Y. TEL: (716) 693-8813	COLCHESTER - U.K. TEL: (44) 120-657-9491		