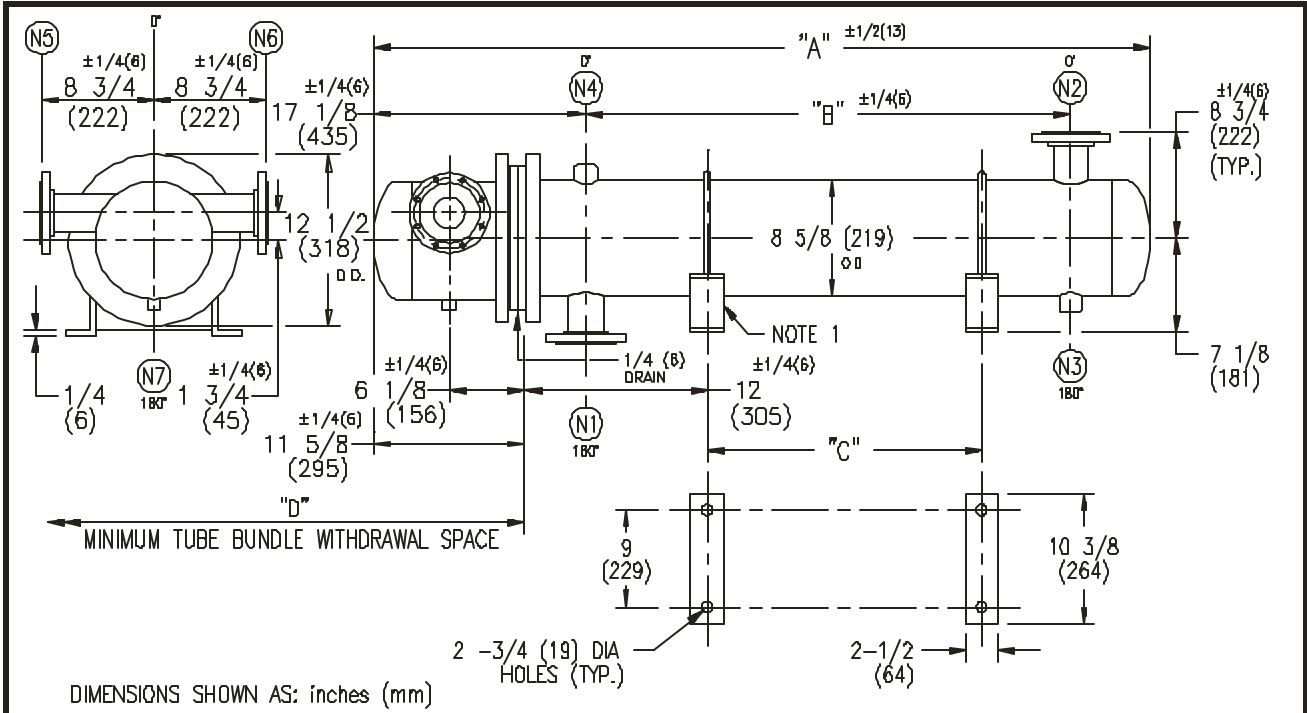


# ARMSTRONG®



EXCHANGER SIZE * BAFFLE SPACING	DIMENSIONS											
	A		B		C		D		N1		N2	
	inches	mm	inches	mm	inches	mm	inches	mm	inches	mm	inches	mm
WX-82-4*-4	37 3/8	949	14	356	3	76	27	686	4	102	4	102
WX-83-4*-4	49 3/8	1254	26	660	15	381	39	991	4	102	4	102
WX-84-4*-4	61 3/8	1559	38	965	27	686	51	1295	4	102	4	102
WX-85-4*-4	73 3/8	1864	50	1270	39	991	63	1600	4	102	4	102
WX-86-4*-4	85 3/8	2169	62	1575	51	1295	75	1905	4	102	4	102
WX-87-4*-4	97 3/8	2473	74	1880	63	1600	87	2210	4	102	4	102
WX-88-4*-4	109 3/8	2778	86	2184	75	1905	99	2515	4	102	4	102
WX-89-4*-4	121 3/8	3083	98	2489	87	2210	111	2819	4	102	4	102
WX-810-4*-4	133 3/8	3388	110	2794	99	2515	123	3124	4	102	4	102
WX-811-4*-4	145 3/8	3693	122	3099	111	2819	135	3429	4	102	4	102
WX-812-4*-4	157 3/8	3997	134	3404	123	3124	147	3734	4	102	4	102
WX-813-4*-4	169 3/8	4302	146	3708	135	3429	159	4039	4	102	4	102
WX-814-4*-4	181 3/8	4607	158	4013	147	3734	171	4343	4	102	4	102

NOZZLE SCHEDULE				
SERVICE	MARK	SHELL SIDE	MARK	TUBE SIDE
INLET	(N1)	AS PER TABLE	(N5)	2 (51) FLG
OUTLET	(N2)	AS PER TABLE	(N6)	2 (51) FLG
DRAIN	(N3)	1/2 (13) NPT	(N7)	1/2 (13) NPT
VENT	(N4)	3/4 (19) NPT		

NOTES: 1. SUPPORTS SUPPLIED ONLY IF SPECIFIED ON ORDER  
 2. NOZZLE SIZES SHOWN ARE RECOMMENDED FOR MAX. EXCHANGER LIFE, NO EXTERNAL FORCES APPLY.  
 3. FABRICATED TO ASME CODE SECTION VIII DIVISION 1 AND LATEST ADDENDA.  
 4. DRAWING IS NOT TO SCALE  
 5. ALL DIMN'S ±1/8 (3) UNLESS OTHERWISE SHOWN.

DESIGN CONDITIONS				
	SHELL		TUBES	
DESIGN PRESSURE	150 PSIG	1034 KPa	150 PSIG	1034 KPa
DESIGN TEMPERATURE	375 °F	191 °C	375 °F	191 °C
MIN. DESIGN METAL TEMP	35 °F	1.7 °C	35 °F	1.7 °C
HYDRO. TEST PRESSURE	225 PSIG	1551 KPa	225 PSIG	1551 KPa
CONTENTS	WATER		WATER	

CUSTOMER LOCATION:  
 ENGINEER:  
 ORDER No.:  
 PROJECT/JOB:  
 LOCATION:  
 TAG: (QUOTE # )

TITLE G.A. 150 LB WX SERIES HEAT EXCHANGERS	A R M S T R O N G				NUMBER WX-8-4P-4(4)	REV.
DATE: 12/01/94 BY D.C.R.	TORONTO - CANADA TEL: (416) 755-2291	MONTREAL - CANADA TEL: (514) 421-2424	BUFFALO - N. Y. TEL: (716) 683-8813	COLCHESTER - U.K. TEL: (44) 120-657-9481		