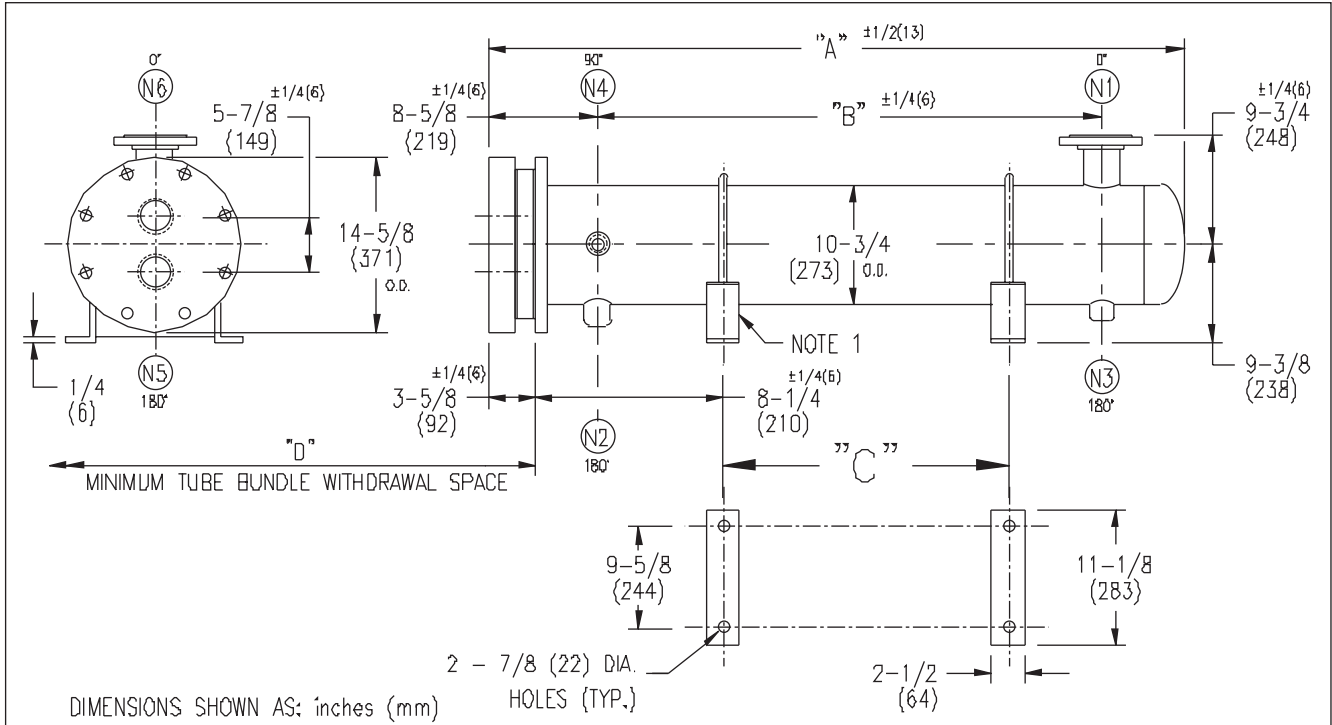


ARMSTRONG®



EXCHANGER SIZE *—BAFFLE SPACING	DIMENSIONS											
	A		B		C		D		N1		N2	
	inches	mm	inches	mm	inches	mm	inches	mm	inches	mm	inches	mm
WS3H-102-2*-E3	40 5/8	1032	23 3/4	603	11 3/4	298	26	660	4	102	1 1/2	38
WS3H-103-2*-E3	52 5/8	1337	35 3/4	908	23 3/4	603	38	965	4	102	1 1/2	38
WS3H-104-2*-E3	64 5/8	1641	47 3/4	1213	35 3/4	908	50	1270	6	152	2	51
WS3H-105-2*-E3	76 5/8	1946	59 3/4	1518	47 3/4	1213	62	1574	6	152	2	51
WS3H-106-2*-E3	88 5/8	2251	71 3/4	1822	59 3/4	1518	74	1879	6	152	2	51
WS3H-107-2*-E3	100 5/8	2556	83 3/4	2127	71 3/4	1822	86	2184	6	152	2	51
WS3H-108-2*-E3	112 5/8	2861	95 3/4	2432	83 3/4	2127	98	2489	6	152	2	51
WS3H-109-2*-E3	124 5/8	3165	107 3/4	2737	95 3/4	2432	110	2794	6	152	2	51
WS3H-1010-2*-E3	136 5/8	3470	119 3/4	3042	107 3/4	2737	122	3098	6	152	2	51
WS3H-1011-2*-E3	148 5/8	3775	131 3/4	3346	119 3/4	3042	134	3403	6	152	2	51
WS3H-1012-2*-E3	160 5/8	4080	143 3/4	3651	131 3/4	3346	146	3708	6	152	2	51
WS3H-1013-2*-E3	172 5/8	4385	155 3/4	3956	143 3/4	3651	158	4013	6	152	2	51
WS3H-1014-2*-E3	184 5/8	4689	167 3/4	4261	155 3/4	3956	170	4318	6	152	2	51
WS3H-1015-2*-E3	196 5/8	4994	179 3/4	4566	167 3/4	4261	182	4623	6	152	2	51

NOZZLE SCHEDULE

SERVICE	MARK	SHELL SIDE	MARK	TUBE SIDE
INLET	N1	AS PER TABLE	N5	3 (76) NPT
OUTLET	N2	AS PER TABLE	N6	3 (76) NPT
DRAIN	N3	1/2 (13) NPT		
VENT	N4	3/4 (19) NPT		

- NOTES: 1. SUPPORTS SUPPLIED ONLY IF SPECIFIED ON ORDER.
 2. NOZZLE SIZES SHOWN ARE RECOMMENDED FOR MAX. EXCHANGER LIFE, NO EXTERNAL FORCES APPLY.
 3. FABRICATED TO ASME CODE SECTION VIII DIVISION 1 AND LATEST ADDENDA.
 4. DRAWING IS NOT TO SCALE.
 5. ALL DIM'S ±1/8 (3) UNLESS OTHERWISE SHOWN.

DESIGN CONDITIONS

	SHELL		TUBES	
	DESIGN PRESSURE	300 PSIG	2068 KPa	300 PSIG
DESIGN TEMPERATURE	375 °F	191 °C	375 °F	191 °C
MIN. DESIGN METAL TEMP.	35 °F	1.7 °C	35 °F	1.7 °C
HYDRO. TEST PRESSURE	450 PSIG	3102 KPa	450 PSIG	3102 KPa
CONTENTS	STEAM		WATER	

CUSTOMER:
LOCATION:

ENGINEER:
ORDER No.:
PROJECT/JOB:
LOCATION:

TAG: (QUOTE #)

TITLE G.A. 300 LB. WS SERIES HEAT EXCHANGERS	A R M S T R O N G				NUMBER WS3H-10-2P-E3	REV.
DATE: 03 / 09 / 01 BY: J.R.	TORONTO - CANADA TEL: (416) 755-2291	MONTREAL - CANADA TEL: (514) 421-2424	BUFFALO - N. Y. TEL: (716) 693-8813	COLCHESTER - U.K. TEL: (44) 120-657-9491		