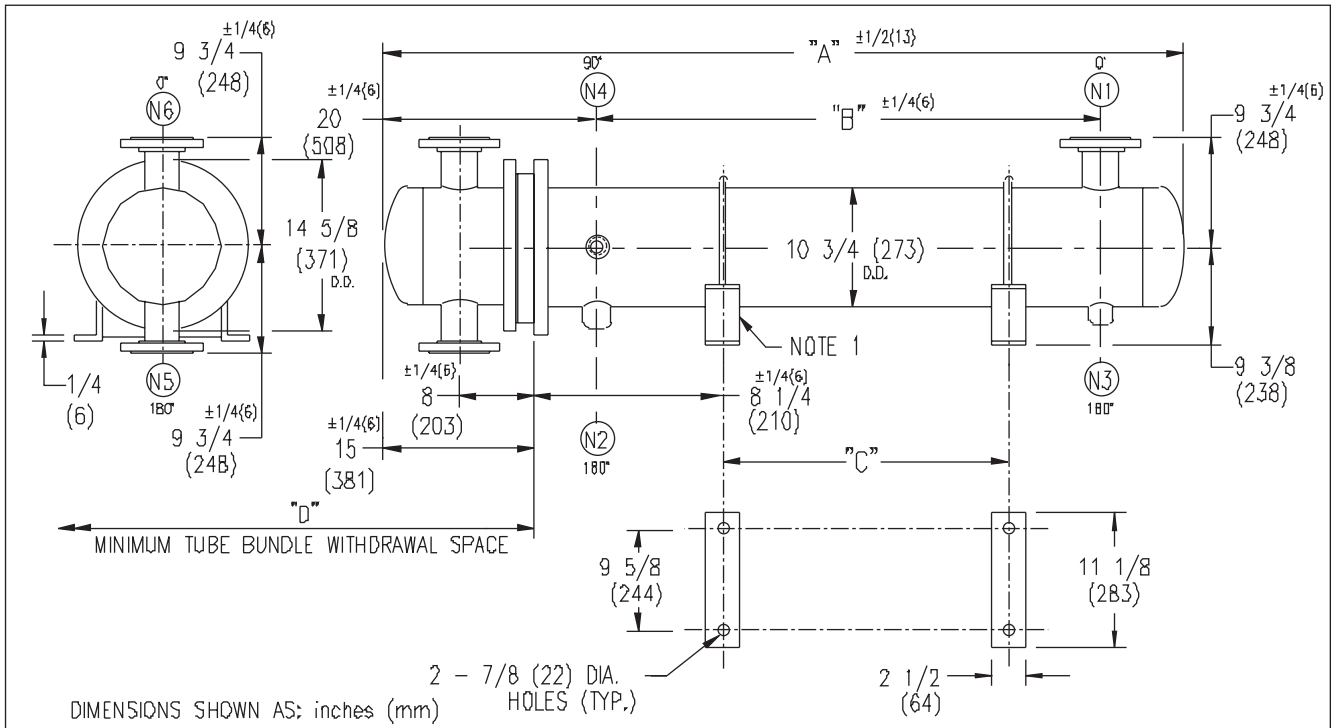


# ARMSTRONG®



EXCHANGER SIZE * - BAFFLE SPACING	DIMENSIONS											
	A		B		C		D		N1		N2	
	inches	mm	inches	mm	inches	mm	inches	mm	inches	mm	inches	mm
WS3H-102-2*-E4	52	1321	23 3/4	603	11 3/4	298	26	660	4	102	1 1/2	38
WS3H-103-2*-E4	64	1626	35 3/4	908	23 3/4	603	38	965	4	102	1 1/2	38
WS3H-104-2*-E4	76	1930	47 3/4	1213	35 3/4	908	50	1270	6	152	2	51
WS3H-105-2*-E4	88	2235	59 3/4	1518	47 3/4	1213	62	1574	6	152	2	51
WS3H-106-2*-E4	100	2540	71 3/4	1822	59 3/4	1518	74	1879	6	152	2	51
WS3H-107-2*-E4	112	2845	83 3/4	2127	71 3/4	1822	86	2184	6	152	2	51
WS3H-108-2*-E4	124	3150	95 3/4	2432	83 3/4	2127	98	2489	6	152	2	51
WS3H-109-2*-E4	136	3454	107 3/4	2737	95 3/4	2432	110	2794	6	152	2	51
WS3H-1010-2*-E4	148	3759	119 3/4	3042	107 3/4	2737	122	3098	6	152	2	51
WS3H-1011-2*-E4	160	4064	131 3/4	3346	119 3/4	3042	134	3403	6	152	2	51
WS3H-1012-2*-E4	172	4369	143 3/4	3651	131 3/4	3346	146	3708	6	152	2	51
WS3H-1013-2*-E4	184	4674	155 3/4	3956	143 3/4	3651	158	4013	6	152	2	51
WS3H-1014-2*-E4	196	4978	167 3/4	4261	155 3/4	3956	170	4318	6	152	2	51
WS3H-1015-2*-E4	208	5283	179 3/4	4566	167 3/4	4261	182	4623	6	152	2	51

### NOZZLE SCHEDULE

SERVICE	MARK	SHELL SIDE	MARK	TUBE SIDE
INLET	N1	AS PER TABLE	N5	3 (76) 300# FLG.
OUTLET	N2	AS PER TABLE	N6	3 (76) 300# FLG.
DRAIN	N3	1/2 (13) NPT		
VENT	N4	3/4 (19) NPT		

- NOTES:
1. SUPPORTS SUPPLIED ONLY IF SPECIFIED ON ORDER.
  2. NOZZLE SIZES SHOWN ARE RECOMMENDED FOR MAX. EXCHANGER LIFE, NO EXTERNAL FORCES APPLY.
  3. FABRICATED TO ASME CODE SECTION VIII DIVISION 1 AND LATEST ADDENDA.
  4. DRAWING IS NOT TO SCALE.
  5. ALL DIM'S ±1/8 (3) UNLESS OTHERWISE SHOWN.

### DESIGN CONDITIONS

	SHELL		TUBES	
DESIGN PRESSURE	300 PSIG	2068 KPa	300 PSIG	2068 KPa
DESIGN TEMPERATURE	375 °F	191 °C	375 °F	191 °C
MIN. DESIGN METAL TEMP.	35 °F	1.7 °C	35 °F	1.7 °C
HYDRO. TEST PRESSURE	450 PSIG	3102 KPa	450 PSIG	3102 KPa
CONTENTS	STEAM		WATER	

CUSTOMER:  
LOCATION:

ENGINEER:  
ORDER No.:  
PROJECT/JOB:  
LOCATION:

TAG: (QUOTE # )

TITLE G.A. 300 LB. WS SERIES HEAT EXCHANGERS	A R M S T R O N G				NUMBER WS3H-10-2P-E4	REV.
DATE: 03 / 09 / 01 BY: J.R.	TORONTO - CANADA TEL : (416) 755-2291	MONTREAL - CANADA TEL : (514) 421-2424	BUFFALO - N. Y. TEL : (716) 693-8813	COLCHESTER - U.K. TEL : (44) 120-457-9491		