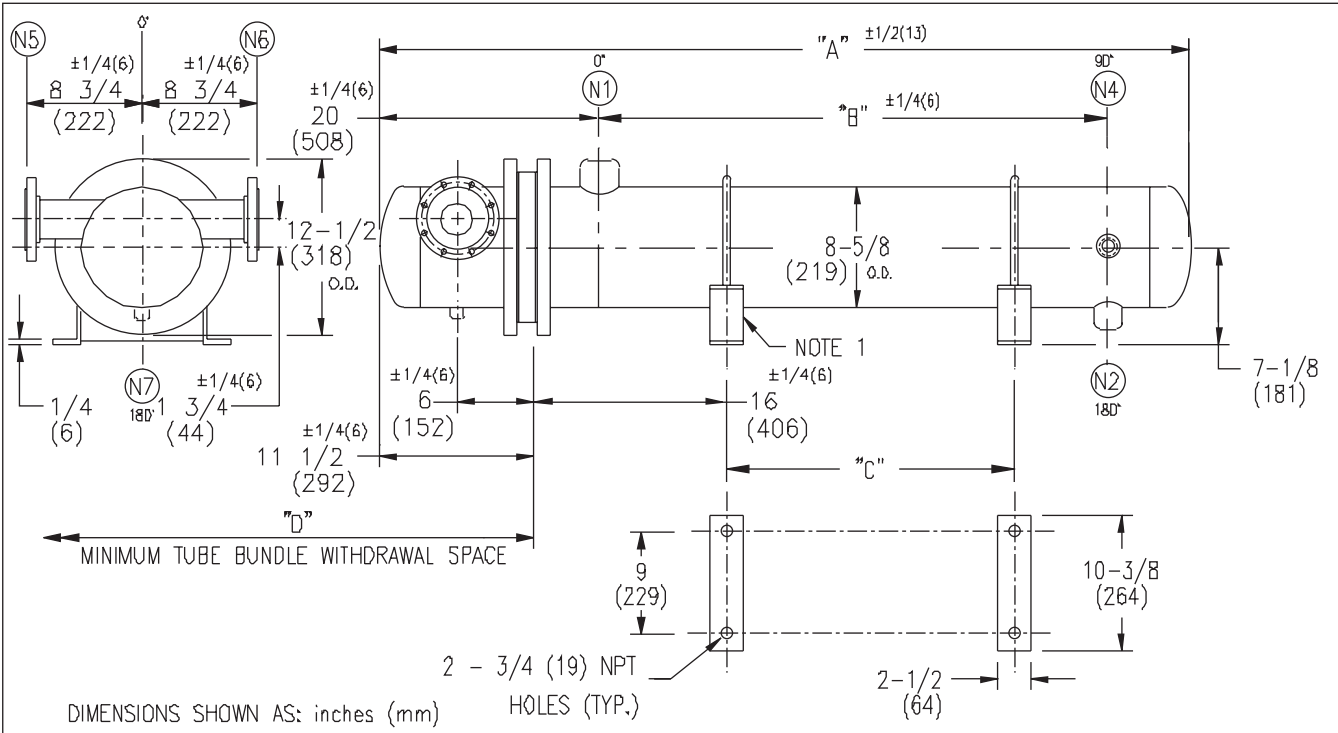


# ARMSTRONG®



EXCHANGER SIZE *BAFFLE SPACING	DIMENSIONS											
	A		B		C		D		N1		N2	
	inches	mm	inches	mm	inches	mm	inches	mm	inches	mm	inches	mm
WS3H-82-4*-4	36 3/4	933	12 1/4	311	4 3/4	121	26	660	2	51	1	25
WS3H-83-4*-4	48 3/4	1238	24 1/4	616	16 3/4	425	38	965	2-1/2	64	1	25
WS3H-84-4*-4	60 3/4	1543	36 1/4	921	28 3/4	730	50	1270	3	76	1	25

NOZZLE SCHEDULE				
SERVICE	MARK	SHELL SIDE	MARK	TUBE SIDE
INLET	N1	AS PER TABLE	N5	2 (51) 300# FLG.
OUTLET	N2	AS PER TABLE	N6	2 (51) 300# FLG.
DRAIN			N7	1/2 (13) NPT
VENT	N4	3/4 (19) NPT		

NOTES: 1. SUPPORTS SUPPLIED ONLY IF SPECIFIED ON ORDER.  
 2. NOZZLE SIZES SHOWN ARE RECOMMENDED FOR MAX. EXCHANGER LIFE, NOEXTERNAL FORCES APPLY.  
 3. FABRICATED TO ASME CODE SECTION VIII DIVISION 1 AND LATEST ADDENDA.  
 4. DRAWING IS NOT TO SCALE.  
 5. ALL DIM'S ±1/8 (3) UNLESS OTHERWISE SHOWN.

DESIGN CONDITIONS				
	SHELL		TUBES	
DESIGN PRESSURE	300 PSIG	2068 KPa	300 PSIG	2068 KPa
DESIGN TEMPERATURE	375 °F	191 °C	375 °F	191 °C
MIN. DESIGN METAL TEMP.	35 °F	1.7 °C	35 °F	1.7 °C
HYDRO. TEST PRESSURE	450 PSIG	3102 KPa	450 PSIG	3102 KPa
CONTENTS	STEAM		WATER	

CUSTOMER:  
 LOCATION:  
 ENGINEER:  
 ORDER No.:  
 PROJECT/JOB:  
 LOCATION:  
 TAG: (QUOTE # )

TITLE G.A. 300 LB. WS SERIES HEAT EXCHANGERS	A R M S T R O N G				NUMBER WS3H-8-4P-4(3)	REV.
DATE: 02 / 05 / 01 BY: J.R.	TORONTO - CANADA TEL : (416) 755-2291	MONTREAL - CANADA TEL : (514) 421-2424	BUFFALO - N. Y. TEL: (716) 693-8813	COLCHESTER - U.K. TEL: (44) 120-657-9491		