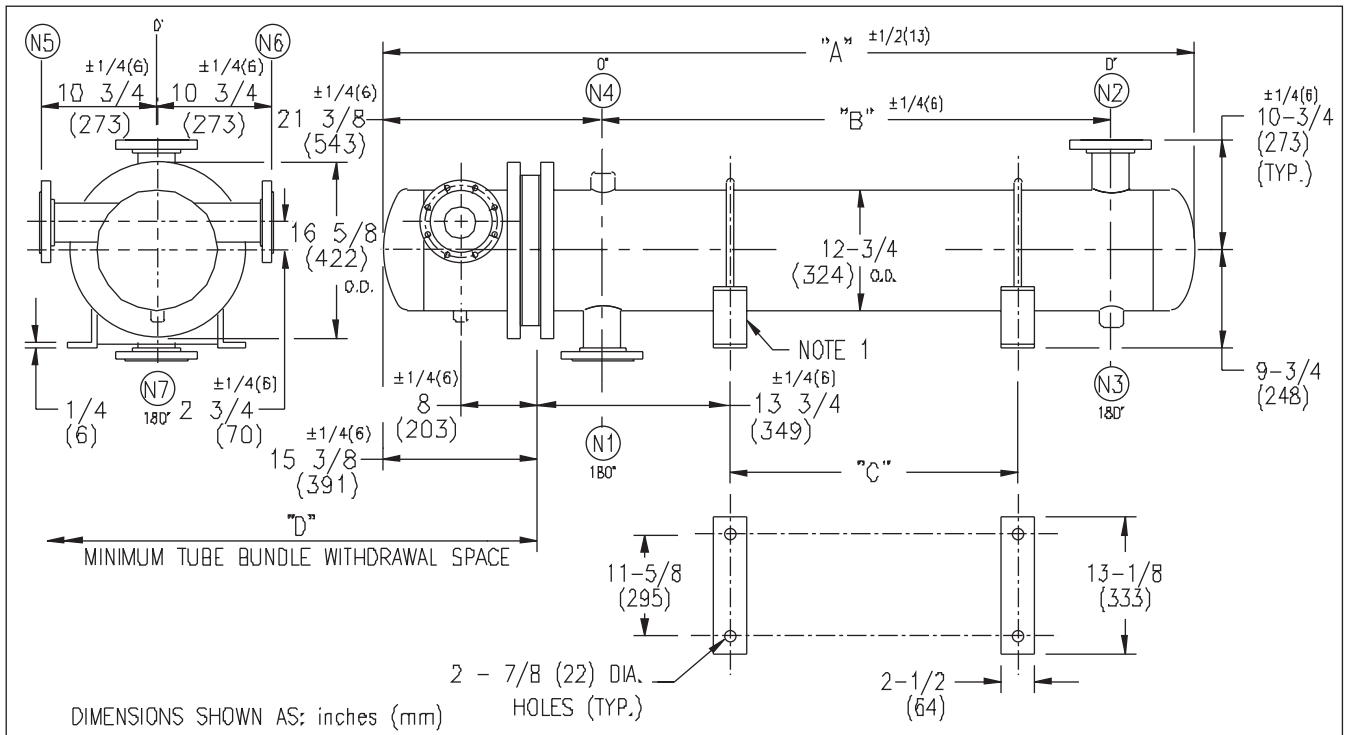


# ARMSTRONG®



EXCHANGER SIZE *-BAFFLE SPACING	DIMENSIONS											
	A		B		C		D		N1		N2	
	inches	mm	inches	mm	inches	mm	inches	mm	inches	mm	inches	mm
W3T-123-4*-4	53 1/2	1359	25	635	14 3/4	375	38	965	4	102	4	102
W3T-124-4*-4	65 1/2	1664	37	940	26 3/4	679	50	1270	4	102	4	102
W3T-125-4*-4	77 1/2	1969	49	1245	38 3/4	984	62	1574	4	102	4	102
W3T-126-4*-4	89 1/2	2273	61	1549	50 3/4	1289	74	1879	4	102	4	102
W3T-127-4*-4	101 1/2	2578	73	1854	62 3/4	1594	86	2184	4	102	4	102
W3T-128-4*-4	113 1/2	2883	85	2159	74 3/4	1899	98	2489	4	102	4	102
W3T-129-4*-4	125 1/2	3188	97	2464	86 3/4	2203	110	2794	4	102	4	102
W3T-1210-4*-4	137 1/2	3493	109	2768	98 3/4	2508	122	3098	4	102	4	102
W3T-1211-4*-4	149 1/2	3797	121	3073	110 3/4	2813	134	3403	4	102	4	102
W3T-1212-4*-4	161 1/2	4102	133	3378	122 3/4	3118	146	3708	4	102	4	102
W3T-1213-4*-4	173 1/2	4407	145	3683	134 3/4	3423	158	4013	4	102	4	102
W3T-1214-4*-4	185 1/2	4712	157	3988	146 3/4	3727	170	4318	4	102	4	102
W3T-1215-4*-4	197 1/2	5017	169	4292	158 3/4	4032	182	4623	4	102	4	102

NOZZLE SCHEDULE				
SERVICE	MARK	SHELL SIDE	MARK	TUBE SIDE
INLET	N1	AS PER TABLE	N5	4 (102) 300# FLG.
OUTLET	N2	AS PER TABLE	N6	4 (102) 300# FLG.
DRAIN	N3	1/2 (13) NPT	N7	1/2 (13) NPT
VENT	N4	3/4 (19) NPT		

NOTES: 1. SUPPORTS SUPPLIED ONLY IF SPECIFIED ON ORDER.  
 2. NOZZLE SIZES SHOWN ARE RECOMMENDED FOR MAX. EXCHANGER LIFE, NO EXTERNAL FORCES APPLY.  
 3. FABRICATED TO ASME CODE SECTION VIII DIVISION 1 AND LATEST ADDENDA.  
 4. DRAWING IS NOT TO SCALE.  
 5. ALL DIMN'S ±1/8 (3) UNLESS OTHERWISE SHOWN.

DESIGN CONDITIONS				
	SHELL		TUBES	
DESIGN PRESSURE	150 PSIG	1034 KPa	300 PSIG	2068 KPa
DESIGN TEMPERATURE	375 °F	191 °C	375 °F	191 °C
MIN. DESIGN METAL TEMP.	35 °F	1.7 °C	35 °F	1.7 °C
HYDRO. TEST PRESSURE	225 PSIG	1551 KPa	450 PSIG	3102 KPa
CONTENTS	WATER		WATER	

CUSTOMER:  
 LOCATION:  
 ENGINEER:  
 ORDER No.:  
 PROJECT/JOB:  
 LOCATION:  
 TAG: (QUOTE # )

TITLE G.A. 300 LB. W SERIES HEAT EXCHANGERS	A R M S T R O N G				NUMBER W3T-12-4P-4(4)	REV.
DATE: 03 / 29 / 01 BY: J.R.	TORONTO - CANADA TEL : (416) 755-2281	MONTREAL - CANADA TEL : (514) 421-2424	BUFFALO - N. Y. TEL: (716) 693-8813	COLCHESTER - U.K. TEL: (44) 120-657-9491		